

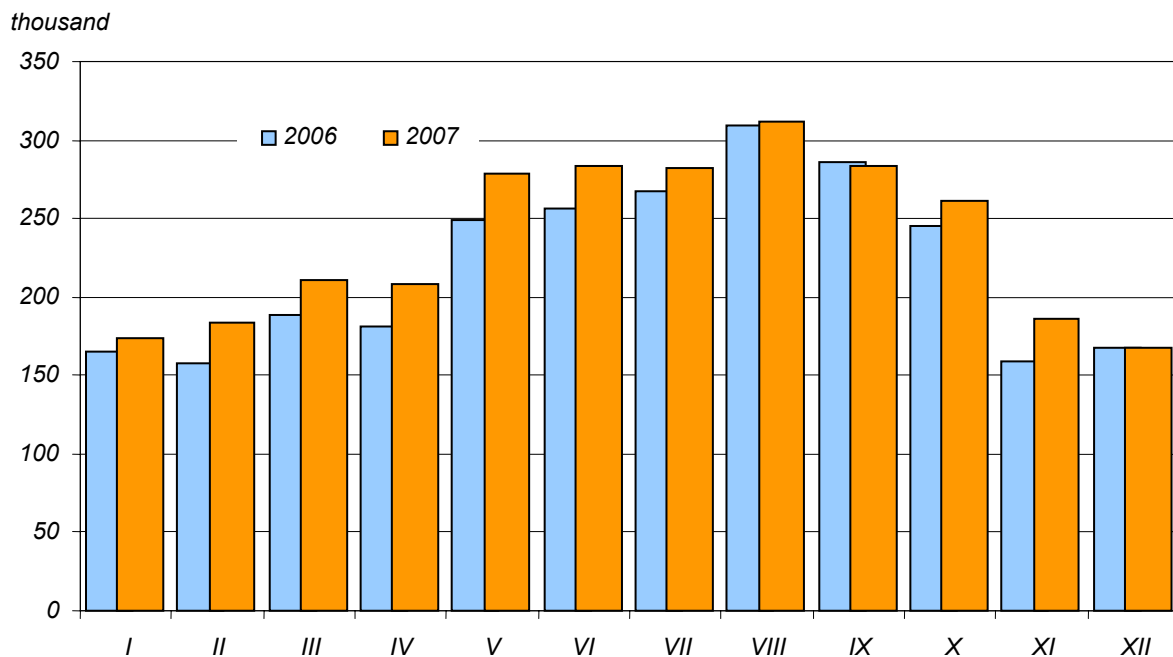
2.1.3. Tourist accommodated and nights spent (overnight stays) in collective tourist accommodation establishments

In 2007 the number of tourists accommodated in collective tourist accommodation establishments increased by 196.7 thousand persons (by 7.5%) and amounted to 2830.5 thousand. The greatest absolute increase was recorded in hotels (by 154.9 thousand persons). The share of people accommodated in hotels has been still growing. In 2007 it amounted to 55.5%. The highest relative increase of the number of tourists accommodated was recorded in: school youth hostels (by 16.4%), facilities classified as "other hotel facilities" (by 15.6%) and hotels (by 10.9%).

TABLE III. TOURISTS ACCOMMODATED AND NIGHTS SPENT (OVERNIGHT STAYS) IN COLLECTIVE TOURIST ACCOMMODATION ESTABLISHMENTS BY TYPE OF FACILITIES

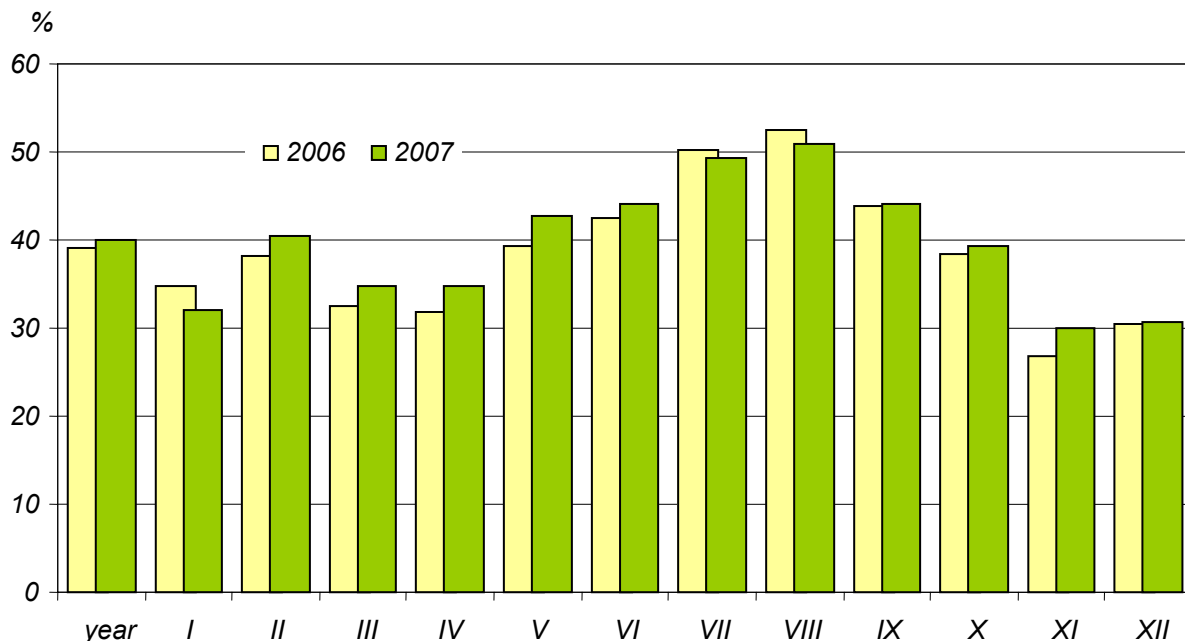
TYPE OF FACILITIES	Tourists accommodated		Nights spent (overnight stays)		Average tourist stay at facility in days	
	in percent				2006	2007
	2006	2007	2006	2007		
TOTAL	100.0	100.0	100.0	100.0	2.9	2.8
Hotel facilities	61.6	63.2	46.0	48.7	2.1	2.2
Hotels	53.8	55.5	38.1	40.8	2.0	2.1
Motels	1.1	1.0	0.5	0.5	1.5	1.5
Boarding houses	4.2	4.0	5.5	5.3	3.7	3.7
Other hotel facilities	2.5	2.7	1.9	2.1	2.2	2.2
Other facilities	38.4	36.8	54.0	51.3	4.0	4.0
Excursion hostels	1.2	0.9	1.3	1.0	3.3	3.3
Shelters	2.4	2.3	1.5	1.5	1.7	1.8
Youth hostels	1.5	1.6	1.1	1.1	2.1	2.0
School youth hostels	2.0	2.2	1.8	1.8	2.6	2.4
Holiday centres	7.8	7.8	11.7	11.6	4.3	4.2
Holiday youth centres	0.3	0.2	0.7	0.6	5.6	7.8
Training-recreational centres ..	6.6	6.2	8.5	7.9	3.7	3.6
Creative arts centres	0.4	0.4	0.7	0.7	5.2	4.7
Public tourist cottages	0.6	0.5	0.9	0.7	4.3	3.8
Camping sites	0.9	0.8	0.7	0.7	2.1	2.4
Tent camp sites	0.2	0.2	0.2	0.2	2.6	2.7
Weekend and holiday accommodation establishments	0.6	0.6	0.4	0.4	1.7	1.7
Health establishments	3.5	3.2	15.3	14.6	12.6	12.8
Other non-classified facilities ..	10.2	9.9	9.3	8.6	2.6	2.5

**TOURISTS ACCOMMODATED
IN COLLECTIVE TOURIST ACCOMMODATION ESTABLISHMENTS
BY MONTHS**



In 2007 there were 8014.0 thousand of overnight stays in collective tourist accommodation establishments — by 6.0% (451.4 thousand) more than in previous year. The number of overnight stays increased the most in hotels — by 386.2 thousand (by 13.4%). The biggest relative increase of overnight stays in comparison with previous year was recorded in “other hotel facilities” — by 16.3% (by 23.3 thousand). In 6 kinds of facilities there was recorded a decrease of the number of overnight stays, from 1.6% in training-recreational centres to 19.6% in excursion hostels. An average stay of a tourist in the facility has been shortened to 2.8 days (2.9 days in 2006).

**OCCUPANCY RATE OF BED PLACES
IN COLLECTIVE TOURIST ACCOMMODATION ESTABLISHMENTS
BY MONTHS**



The occupancy rate of bed places in collective tourist accommodation establishments in 2007 increased by 0.8 percentage point and amounted to 39.9%. The occupancy rate increased the most in youth hostels (by 5.3 percentage point), health establishments (by 3.5 point) and holiday youth centres (by 2.9 point). Traditionally, the highest occupancy rate of bed places was recorded in August — 50.8% and in July — 49.4%. The occupancy rate of bed places during holidays and in January decreased in relation to 2006, however it increased in all other months of the year.

The occupancy rate of rooms in hotel facilities was the same as in 2006 and it amounted to 51,4%, however it decreased in hotels (by 0.6 percentage point) and in motels (by 1.2 point), and increased in other hotel facilities (by 3.1 percentage point) as well as in boarding houses (by 1.0 point).

OCCUPANCY RATE OF BED PLACES IN COLLECTIVE TOURIST ACCOMMODATION ESTABLISHMENTS BY TYPE OF FACILITIES

