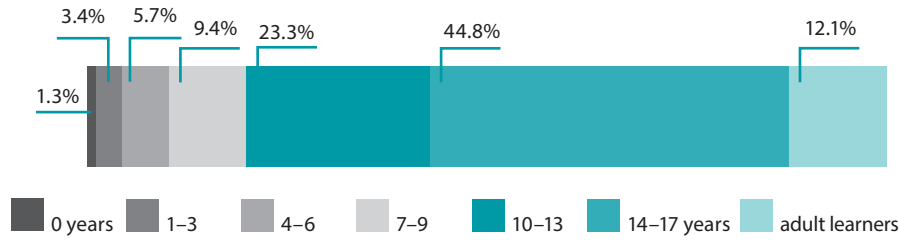


# Institutional foster care 2018 as of 31 XII 2018

Centre for Social Assistance Statistics



## Residents by age



16 655

residents

1165

centres

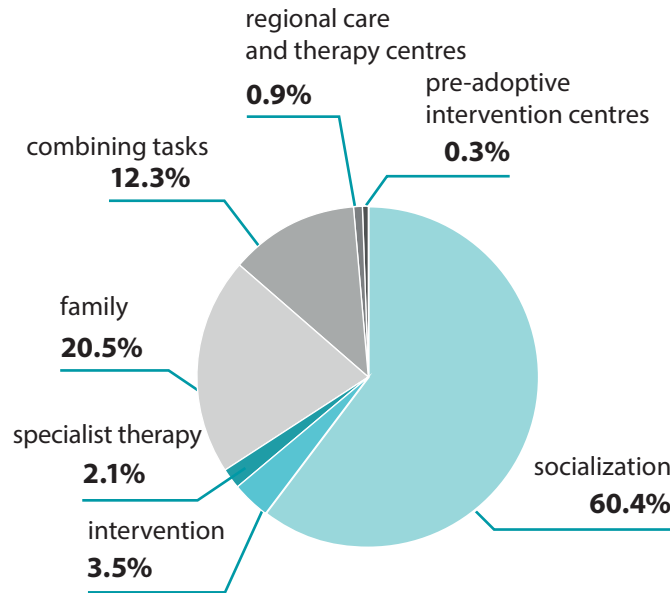
18 697

places

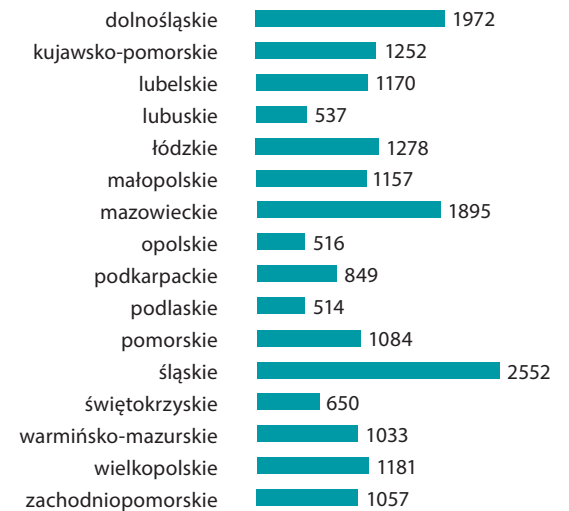
## Centres by voivodships



## Centres by type



## Places by voivodships



496

orphans

2011

disabled

64

foreigners

Residents up to age 18 per 1 thousand children of the same age

